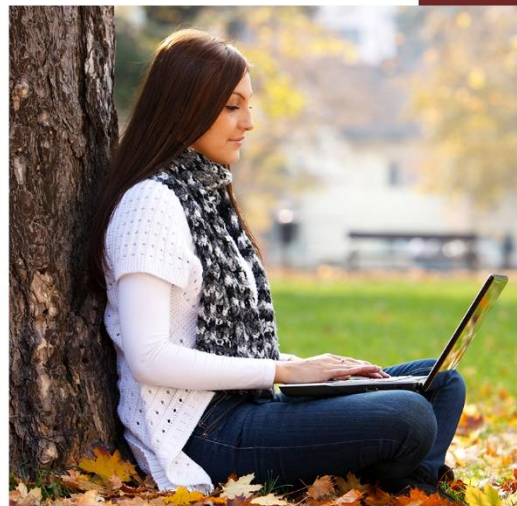
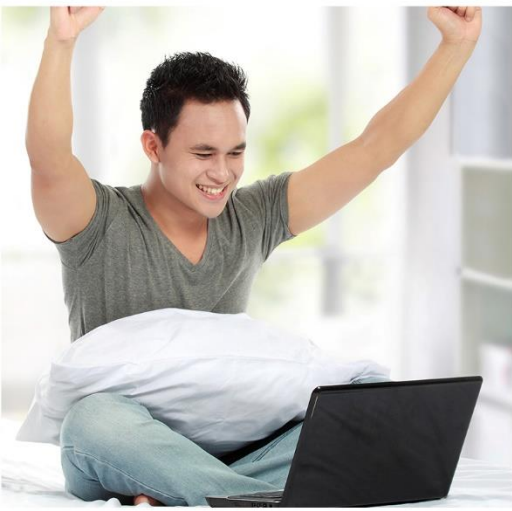


CONSORTIUM
of Adventist Colleges & Universities

SYLLABUS



SOCI 119 Principles of Sociology
Fall 2020

SOCI 119 Principles of Sociology

Consortium of Adventist Colleges and Universities

Interactive Online Format

This course follows an interactive online format and has Thursday deadlines. You are expected to login regularly during the course to participate in the online discussions. Please plan accordingly. **Please review the Dates & Deadlines widget on the right side of your course in LearningHub for the last day to withdraw for a full refund.**

Instructor Contact

Please refer to course in LearningHub for the teacher contact information.

Other Assistance

Username and password assistance	helpdesk@andrews.edu	(269) 471-6016
Enrollment and withdrawal questions	sderegister@andrews.edu	(269) 471-6323
Technical assistance with online courses	dlit@andrews.edu	(269) 471-3960
Exam requests and online proctoring	sdeexams@andrews.edu	(269) 471-6566
Distance Student Services - any other questions	sdestudents@andrews.edu	(269) 471-6566

Part 1: Course Information

Course Descriptions

A study of the development of sociology as a social science, some concepts and ideas associated with the study of human behavior, and an overview of the principles, terms, and concepts in the discipline.

Required Text/Material

Henslin, James M., *Sociology: A Down-to-Earth Approach*, 13th Edition, 2017, ISBN 978-0134205571.

NOTE: Textbooks for online courses may be purchased from any supplier. For financial aid in payment, contact your financial advisor at the university where you are completing your degree. Andrews University degree students who have confirmed that funds are available will then purchase the books themselves and send receipts to their financial advisor for reimbursement.

Credit Hour and Commitment

This course is offered for 3 semester credits; therefore it is expected that you will spend 135 total hours on this course. This translates to a steady 11.25 hours each week. You'll spend your time on 10 assignments, 10 quizzes, 5 Research Summaries, 5 Active Learning Activities, and 2 exams.

A recommended weekly schedule to divide your time is provided:

Readings: 3.5 hours

Interactive Discussions: 1.25 hour

Quizzes: 1.25 hour

Assignment: 2.5 hour

Weekly work on Final Paper: 1.25 hour

Studying for Upcoming Exams: 1.5 hours

Institutional Outcomes:

- 1.a. Demonstrate competence in intellectual, affective, and practical skills to prepare for careers in the twenty-first century, lifelong learning and service.
- 1.b. Select and apply intellectual, affective, and practical skills from their field of study to solve meaningful problems. The identified transferable skills for undergraduate students are: information literacy, quantitative literacy, engaging diverse perspectives, ethical reasoning, analytical inquiry in the form of problem solving and creative thinking, communication, wellness and transferable life skills.
- 2.b. Pursue enduring questions through study in core fields and explore the connections between those fields.

Student Learning Outcomes

Following this course, students will be able to:

1. Recognize the power of human relationships and describe environmental factors that influence human behavior.
2. Define concepts, terminology, and recognize the contributions of major figures in the field of sociology.
3. Define, compare, and contrast the three basic theoretical approaches of sociology—the functionalist, conflict theory, and symbolic interactionist perspectives.
4. Apply basic sociological research approaches in developing knowledge of human behavior.
5. Demonstrate increased self-awareness and an enhanced understanding of the people in their environment.

Part 2: Course Methods and Delivery

Methods of Instruction

Methods of instruction include assigned readings from the textbook and the course material, tutorials in the form of power point presentations, terminology reviews, short essays and reflections on the reading, short open book quizzes on the readings, active learning activities which will be shared with your classmates, research summaries, and two exams. Regular participation in the course is essential to good performance.

Technical Requirements

- Internet connection (DSL, LAN, or cable connection desirable).

LearningHub Access

This course is delivered online through LearningHub at <http://learninghub.andrews.edu>

Your username and password are your Andrews username and password. You need to activate your username and password to access LearningHub.

Please do this online here:

<https://vault.andrews.edu/vault/pages/activation/information.jsp> if you haven't already. If you need assistance, call or email us: (296) 471-6016 or <mailto:helpdesk@andrews.edu>.

If you need technical assistance at any time during the course, or to report a problem with LearningHub, please email dlit@andrews.edu or call (269) 471-3960.

Part 3: Course Requirements

Important Note: This online class is **not** self-paced. You can arrange your schedule flexibly during each week, but you **MUST** participate each week. You are expected to “show up” to class by interacting in the discussion forums a minimum of two times per week. In addition, assignments are due regularly each week. Adequate Internet access during the duration of the course is critical for your participation. To be successful, plan to spend time daily on the course.

Assessment Descriptions

Your grade will be determined by points from the following activities and assessments:

Quizzes – You will be quizzed over the terminology from the book.

Active learning assignments - Throughout the course, you will complete five active learning assignments. You will be expected to share your experiences with the class a discussion board forum. More information will be given in the individual chapters to which they pertain. 20 points each.

Research summary - Instead of a research paper, you will complete 2 research summaries in the duration of the course. More information will be given in the individual chapters to which they pertain. 20 points each.

Discussion forum- Pertinent questions will be posted for reflection. You are expected to respond to these questions using a minimum of 250 words. 50 points each. For more information about discussion forum, please see below:

Discussion forums are opportunities for you, the course instructor and your classmates to engage in robust online conversations. In some instances, where one student is enrolled in a course, discussions will be with the instructor. Those conversations are most often based on academic topics and questions. They are integral to the course and provide avenues for enriching knowledge as well as constructing knowledge through thoughtful dialogue with peers and instructors.

Some discussions are formal in nature and call for thorough scholarship. They hold to the same academic standards for originality and honesty as other academic work (e.g. papers, essays, quizzes and exams). Whenever appropriate, any idea or statement in a discussion forum that is not your own original work should be referenced, according to the style guide adopted by your academic discipline (e.g. APA, MLA, Chicago, etc.).

There may also be forums in the course in which the discussions are informal. Such discussions may include personal introductions and opportunities to know more about other participants in

the course as well as academic topics. Informal forums are great for sharing interests, observations and encouragements with classmates.

For each forum in this course you will be required, unless otherwise instructed, to create an initial post and, at least, two replies to classmates. Course weeks [after the first week] begin on Friday and end on Thursday. The initial post is due by 11:55 pm on Sunday of the week the discussion is assigned. Replies to classmates are due by 11:55 pm on Thursday of the week the discussion is assigned.

Exams - There will be two exams; a midterm and a final exam. More information will be given in the sections that pertain to them, in the course schedule.

Rubrics

Rubric for Active Learning Assignments

Required Item	Points Possible	Full Points	Partial Points	No Points
Active Learning Assignment	5 points	Active learning assignment is completed and a “selfie” of the student completing the activity is submitted to the professor/shared with the class.	Active learning assignment is completed but no “selfie” is submitted.	Active learning assignment is not completed.
Write-up Description	5 points	1/2 page write-up including a detailed description of active learning assignment completed.	Write-up is less than 1/2 a page detailing active learning assignment.	No description of active learning assignment included.
Write-up Application	10 points	1/2 page write-up applying active learning assignment to chapter, including a concise explanation as to why this particular topic matters in society today.	Write-up is less than 1/2 a page <i>or</i> does not apply active learning assignment to chapter <i>or</i> include a concise explanation as to why this particular topic matters in society today.	No application of active learning assignment included.
TOTAL POINTS	20 points			

Rubric for Research Summaries

Required Item	Points Possible	Full Points	Partial Points	No Points
Full citation in APA format	2 points	Citation is written in correct APA formatting	Citation is listed but is not in APA formatting	Citation is not listed
Abstract Summary	2 points	A complete summary of the study abstract is written in the student’s own words, in paragraph form.	A partial summary of the study abstract is listed <i>or</i> is not written in the student’s own words <i>or</i> a complete abstract is written but is not in paragraph form.	An abstract summary is not present.
Topic	2 points	The topic of the research study is clearly defined and explained in paragraph form.	The topic of study is defined but not explained <i>or</i> is not written in paragraph form.	The topic of study is not defined.
Methods	4 points	Research methods are clearly defined and explained in paragraph form.	Research methods are defined but not explained <i>or</i> are not written in paragraph form.	Research methods are not defined.
Sample size	2 points	The sample size is clearly defined and explained in paragraph form.	The sample size is defined but not explained <i>or</i> is not written in paragraph form.	The sample size is not defined.

Sampling methods	2 points	Sampling methods are clearly defined and explained in paragraph form.	Sampling methods are defined but not explained <i>or</i> are not written in paragraph form.	Sampling methods are not defined.
Findings	2 points	Study findings are clearly explained in the student's own words, in paragraph form.	Study findings are mentioned but not clearly explained <i>or</i> is not written in the student's own words <i>or</i> are not written in paragraph form.	Study findings are not explained.
Application	4 points	Study findings are clearly applied to the chapter to which they apply and exhibit a concise explanation as to why this particular topic matters in society today.	Study findings are applied to the chapter but not tied into current society <i>or</i> are not applied to the chapter but are linked to society today.	Study application is missing.
TOTAL	20 points			

Rubric for Discussion forums

Criteria	Exceptional	Very Good	Acceptable	Needs Improvement	No Submission
Frequency & Quantity	(10 points) 3 or more posts EACH week.	(8 points) At least 2 posts EACH week.	(7 points) At least 1 post EACH week.	(6 points) 1 post total or does not post in all weeks discussion is current.	(0 points) No Submission
Quality	(15 points) All posts use course terms and concepts accurately, focus on the topic, and show critical thinking.	(12 points) Majority of posts use course terms and concepts accurately, focus on the topic, and show critical thinking.	(10.5 points) Less than half of posts use course terms and concepts accurately, focus on the topic, and show critical thinking.	(9 points) No posts use course terms and concepts accurately, focus on the topic, or show critical thinking. Or, posts only once the entire discussion.	(0 points) No Submission
Community	(15 points) All posts acknowledge posts of others and expand the discussion using examples from reading, Web research, or personal experience as appropriate.	(12 points) Majority of posts acknowledge posts of others and expand the discussion using examples from reading, Web research, or personal experience as appropriate.	(10.5 points) Less than half of posts acknowledge posts of others and expand the discussion using examples from reading, Web research, or personal experience as appropriate.	(9 points) One or more posts violate Mutual Respect Policy and/or no posts acknowledge the contributions and ideas of class peers. Or, posts only once the entire discussion.	(0 points) No Submission
Citation	(5 points) All posts use accurate citation in APA format where appropriate.	(4 points) Majority of posts use accurate citation in APA format where appropriate.	(3.5 points) Less than half of posts use accurate citation in APA format where appropriate.	(0 points) One or more posts are plagiarized. <i>[This may be grounds for a zero!]</i> Or, posts only once per discussion.	(0 points) No Submission
Length	(5 points) All posts are a reasonable length (250-300 words).	(4 points) Majority of posts are a reasonable length (250-300 words).	(3.5 points) Less than half of posts are a reasonable length (250-300 words).	(3 points) All posts exceed word limit or fail to meet word limit. Or, posts only once the entire discussion.	(0 points) No Submission

Exams

The Midterm exam is worth 17.5% of your grade. You are allowed 120 minutes to complete this exam. The Final exam is worth 20% of your grade. You are allowed 120 minutes to complete this exam.

All exams in this course require proctoring. Follow prompts in the course space to set up your exam session. In each module that contains an exam, you will find what to review and what materials are allowed (if any) during the exam.

Please read the important information about taking exams and how online proctoring works at www.andrews.edu/distance/students/exams.html. Then follow the instructions that apply to your situation on the [exam request form](#) to set up your exam session.

Please note that an exam code is never released to the student. All students must present photo identification before each exam session. Exams can only be proctored after a deadline with approval directly from the instructor to the Testing Center (sdeexams@andrews.edu or 269-471-6566). No exam is returned to the student for review. The instructor, to aid studying for future exams can provide feedback on exams.

Schedule:

All times in the schedule are for the U.S. Eastern Time Zone. All assignments are due Thursdays in the week assigned unless otherwise noted.

Week	Lessons	Readings	Assignments	Outcomes Met
Intro	These items will need to be completed before you will have access to the rest of the course	Orientation Course Overview Introductions Academic Integrity	Student Introductions Academic Integrity Quiz Academic Integrity Statement	
1 Aug 24-27	Lesson 1: Chapter 1 - The Sociological Perspective; Chapter 2 - Culture	Page 1-33 Page 34-62	Discussion forum 1 Quiz 1 Due Thursday, Sept 3, 11:55pm	SLO2, SLO3 SLO1, SLO2, SLO5
2 Aug 28 – Sept 3	Lesson 2: Chapter 4 - Social Structure and Social Interaction	Page 96-126	Discussion forum 2 Quiz 2	SLO2, SLO3 SLO2, SLO3
3 Sept 4-10	Lesson 3: Chapter 5 - How Sociologists Do Research; Chapter 6 - Societies to Social Networks	Page 127-147 Page 148-173	Discussion forum 3 Quiz 3	SLO4 SLO2, SLO3
4 Sept 11-17	Lesson 4: Chapter 7 - Bureaucracy and Formal Organizations	Page 174-195	ALA 1: Meme Quiz 4	SLO1, SLO4 SLO2, SLO3
5 Sept 18-24	Lesson 5: Chapter 8 - Deviance and Social Control	Page 196-227	Discussion forum 4 Quiz 5	SLO1, SLO5 SLO2, SLO3
6 Sept 24 – Oct 1	Lesson 6: Chapter 10 - Social Class in the United States	Page 261-293	Research Summary 1 Discussion forum 5	SLO4 SLO2, SLO4, SLO5
7 Oct 2-8	Lesson 7: Chapter 11 - Sex and Gender	Page 294-325	Discussion forum 6 Quiz 6 Study for Midterm Exam	SLO1 SLO2, SLO3
8 Oct 9-15	MIDTERM EXAM			
9 Oct 16-22	Lesson 8: Chapter 12 - Race and Ethnicity; Chapter 14 - The Economy	Page 326-364 Page 394-426	ALA 2: Picture Analysis Discussion forum 7	SLO1, SLO5 SLO2, SLO3, SLO4
10 Oct 23-29	Lesson 9: Chapter 16 - Marriage and Family	Page 459-492	ALA 3: Reflection on advertisements Quiz 7	SLO1, SLO2, SLO3, SLO5
11 Oct 30 – Nov 5	Lesson 10: Chapter 17 - Education	Page 493-519	ALA 4: Video Comparison Quiz 8	SLO1 SLO2, SLO3
12 Nov 6-12	Lesson 11: Chapter 18 - Religion	Page 520-554	ALA 5: Reflection on Interfaith Research Summary 2	SLO2, SLO4, SLO4
13 Nov 13-19	Lesson 12: Chapter 19 - Medicine and Health	Page 555-586	Discussion forum 8 Quiz 9	SLO2, SLO3 SLO2, SLO3, SLO5
14 Nov 20-26	Lesson 13: Chapter 20 - Population and Urbanization	Page 587-621	Discussion forum 9 Due Friday, Nov 27 at 5pm	SLO1, SLO2, SLO5
15 Nov 27 – Dec 3	Lesson 14: Chapter 21 - Collective Behavior and Social Movements	Page 622-647	Quiz 10 Study for Final Exam	SLO2, SLO3
16 Dec 4-10	FINAL EXAM (Needs to be due by December 9, by 11:59 PM)			

Completing Assignments

All assignments for this course will be submitted electronically through LearningHub unless otherwise instructed.

Part 4: Grading Policy

Graded Course Activities

Percent %	Description
10	Quizzes
10	Research Summaries
22.5	Discussion forums
20	Active Learning Assignments
17.5	Midterm Exam
20	Semester Exam
100	Total Percent Possible

Viewing Grades in Moodle

- Click into the course.
- Click on the **Grades** link in Administration Block to the left of the main course page.

Letter Grade Assignment

Letter Grade	Percentage
A	93-100%
A-	90-92%
B+	88-89%
B	83-87%
B-	80-82%
C+	78-79%
C	73-77%
C-	70-72%
D	60-69%
F	0-59%

Part 5: Course Policies

Withdrawal and Incomplete Policies

The current withdrawal policy can be found online at <https://www.andrews.edu/distance/students/gradplus/withdrawal.html>. The incomplete policy is found online at <http://www.andrews.edu/weblmsc/moodle/public/incompletes.html>.

Late Work

Due dates are listed both in the LearningHub course space and in the syllabus. Late work will have 10% of the earned points deducted.

Maintain Professional Conduct Both in the Classroom and Online

The classroom is a professional environment where academic debate and learning take place. Your instructor will make every effort to make this environment safe for you to share your opinions, ideas, and beliefs. In return, you are expected to respect the opinions, ideas, and beliefs of other students—both in the face-to-face classroom and online communication. Students have the right and privilege to learn in the class, free from harassment and disruption.

Netiquette

In this course you will communicate with your classmates and instructor primarily in writing through the discussion forum and e-mail.

"Online manners" are generally known as "netiquette." As a general rule, you should adhere to the same classroom conduct that you would "off-line" in a face-to-face course. Some examples of proper netiquette are:

1. Avoid writing messages in all capital letters. THIS IS GENERALLY UNDERSTOOD AS SHOUTING.
2. Be careful what you put in writing. Even if you are writing an e-mail message to one person, assume that anyone could read it. Though you may send an e-mail to a single person, it is very easy to forward your message to hundreds or thousands of people.
3. Grammar and spelling matter. Online courses demand the same standard of academic communication and use of grammar as face-to-face courses.
4. Never use profanity in any area of an online course. The transcripts of online course discussion forums, e-mail, and chat sessions are savable.
5. When responding to messages, only use "Reply to All" when you really intend to reply to all.
6. Avoid unkindly public criticism of others. Publicly criticizing others in an inappropriate way is known as "flaming." Consider this course a practice forum for selecting your verbiage thoughtfully and professionally.
7. Use sarcasm cautiously. In the absence of nonverbal cues such as facial expressions and voice inflections, the context for your sarcasm may be lost, and your message may thus be misinterpreted.
8. In a face-to-face setting, our tone of voice and facial expressions may convey as much of our meaning as the words we use. In a written message, the subtext of your meaning may be confused or misinterpreted. Write clearly. Use active verbs.

[Source: University of Maryland, Communications Department]

Academic Accommodations

Students who require accommodations may request an academic adjustment as follows:

1. Read the Andrews University Disability Accommodation information at <https://www.andrews.edu/services/sscenter/disability/>
2. Download and fill in the disability form at <http://www.andrews.edu/services/sscenter/disability/accommodationsreqform.pdf> . Preferably type answers. To save a digital copy, 1) print to file and save or 2) print and scan. Email the completed form and disability documentation (if any) to success@andrews.edu or fax it to (269) 471-8407.
3. Email sdestudents@andrews.edu to inform the School of Distance Education that a disability has been reported to Student Success.

Commitment to Integrity

As a student in this course, and at the university, you are expected to maintain high degrees of professionalism, commitment to active learning, participation in this course, and integrity in your behavior in and out of this online classroom.

Commitment to Excellence

You deserve a standing ovation based on your decision to enroll in, and effectively complete this course. Along with your pledge of “commitment to Integrity” you are expected to adhere to a “commitment to excellence.” Andrews University has established high academic standards that will truly enhance your writing and communication skills across the disciplines and in diverse milieu with many discourse communities in the workplace.

Honesty

Using the work of another student or allowing work to be used by another student jeopardizes not only the teacher-student relationship but also the student’s academic standing. Lessons may be discussed with other students, tutors may help to guide a student’s work, and textbooks, encyclopedias and other resource materials may be used for additional assistance, but the actual response must be the student’s own work. A student who gives information to another student to be used in a dishonest way is equally guilty of dishonesty.

Any violation of this policy will be taken before the Higher Education Academic and Curriculum Committee for appropriate punitive action.