

Understanding ImagesAnalyzing Literature

ART 106 /50 ONLINE SYLLABUS

SAMPLE

COURSE INFORMATION

Professor:

Jill Foote-Hutton

Office:

Online Course

Office Hours:

By Appointment

Contact Information:

jfootehutton@wesleyancollege.edu (Expect a response within 24 hrs.)

Class Location and Time:

Online, once weekly live chat times to be announced at the end of Week 1

Text/ISBN:

Design Basics, 8th edition, by David A. Lauer and Stephen Pentak (2011) ISBN: 0-495-91577-7

POLICIES and PROCEDURES

Goals

An introduction to two-dimensional design used to provide a formal structure for the study of visual images. Students will learn the use of visual elements (line, shape, form, texture, value, color, pattern) and principles (composition, unity, variety, emphasis, contrast, rhythm, motion, etc.) In an analytical study of images from art and culture.

Content

Works of art will be formally analyzed. Visual meaning in images will be evaluated by studying the artist's intentions and stylistic execution.

Requirements

Students will regularly review and research the composition and context of contemporary and historical works of art. Through practical application of exercises to understand the principles and elements of design used in the works we review as a class, students will develop a working language to successfully analyze visual imagery. By regularly contributing to online in-class discussions of selected works and the concepts/context surrounding said works students will build a vocabulary and critical thinking skills necessary to navigate a world of visual imagery. Students will be expected to demonstrate an understanding of course concepts, readings, and video tutorials through homework, classwork assignments, and quizzes. Students will also complete one verbal analysis and one written analysis over the course of the term; each of these will be shared with one-week to prepare. Quizzes will be presented every other week and will contain identification and short answer. Practical application assignments will be demonstrated and students will be graded on completion and demonstrated understanding of concepts, not on the quality of their draughtsmanship. Work completed this term will be submitted through the course's Canvas site, or via e-mail or text. Students will receive ample instruction and guidance on how to accomplish these tasks.

Prerequisites

None

Participation and Grading

Online courses offer great flexibility for students who have busy schedules. Please keep in mind, though, that “online” does not equal easy! The most effective online courses are not self-paced independent studies but highly interactive, collaborative learning environments where we can hold in-depth conversations, ask hard questions, and share our work in progress—just as we would if we were meeting face-to-face. Being successful in an online course at Wesleyan requires careful time management, attention to detail, a willingness to ask for help when you need it, and the ability to read detailed instructions and work independently.

Because we will not be meeting together in a traditional classroom, you will be responsible for participating and demonstrating your understanding of course material in different ways: through our weekly live chat sessions, discussion forums, and online assignments. To ensure that you are participating fully and successfully in this course, please adhere to the following guidelines:

- ✓ You should join each discussion forum and live chat activity on time and prepared to participate fully in class discussions and collaborative activities. Often our forum will act as an online “sketchbook” where you can share images from observational scavenger hunts. In our live chats you should always have your notess, pens/pencils, and any other materials requested by your professor on hand. Frequent tardiness, absences, low participation, and/or unpreparedness may result in a lower course grade.
- ✓ Your professor will offer at least one real-time meeting in our virtual classroom each week. These live chat sessions are a vital opportunity for you to ask questions, ensure you are on track with your work, and collaborate with your classmates and professor—just as you would in a face-to-face classroom. Weekly live chat attendance is flexible, but missing a live chat session is the same as missing class time. Please be aware you are responsible for all information, instructions, and discussion points covered during the sessions regardless of whether you attended. You should aim to attend a minimum of four live chats over the course of the term, but attending more often will boost your overall performance in this course. If for some reason you cannot attend a weekly live chat session, you should plan to review the recording and complete a Live Chat Exit Ticket by the end of the week. You can find the Live Chat exit ticket on our course site under the “Study Materials” button. A live chat scheduling poll and further instructions will be provided during Week 1.
- ✓ You should initiate communication with your professor when help or extensions are needed and resolve any technical issues as soon as possible.
- ✓ You should check your Wesleyan e-mail daily and respond to your professor’s e-mail requests within 24 hours (sooner would be better).
- ✓ Every week you will have reading/videos and assignments (most weeks the assignments will be one short quiz and one practical application exercise) to complete. As a rule of thumb, you should expect to spend 6–7 hours each week participating in forum discussions, attending (or reviewing the recordings of) live chat sessions, studying independently, and completing homework. Be sure to plan your weekly schedule carefully to ensure you have adequate time to complete course activities and assignments thoroughly and on time.
- ✓ Meeting scheduled deadlines is essential. You are expected to submit assignments in a timely and regular fashion without reminders from your professor. Oftentimes, other students will be depending on you to submit your work on time so that they may finish their own work. Don’t wait until the last minute to begin the week’s work because computer problems, last minute emergencies, and sudden outages DO happen!

Your grade in this course will be determined by your performance in the following categories:

Assignments	Percentage
Discussion Forum Collaboration	15%
Live Chat Collaboration	15%
Practical Application AssignmentsExercises	10%
Module Quizzes	25%
Critical Analysis (One Verbal & One Written)	35%
TOTAL:	100%

The grading scale in the class will be as follows:

A=90-100%
B=80-89%
C=70-79%
D=60-69%
F=59% and below

You may track your running point total throughout the term via our Canvas course site. Please be aware, however, that the course grade you see in Canvas will reflect only the assignments and activities you have already completed. You will have three major assignments due, one at week four and two at week eight near the end of the term. Your performance on these assignments will have a significant impact on your final course grade, so be sure to set aside plenty of time to complete them to the best of your ability.

Academic Integrity

The Honor Code is the foundation upon which life in the Wesleyan College community is built. Academic violations of the Honor Code include, but are not limited to: cheating, plagiarism, unauthorized collaboration, inventing or falsifying information, turning in work for more than one class without authorization, or helping someone else violate the Honor Code. Students must self-report academic violations of the Honor Code to the faculty member teaching the class. If a student knows of an academic violation of the Honor Code by another student, she must report that violation to the faculty member if the student does not self-report.

In this class, violations of the Honor Code will, minimally, result in a zero on the assignment in question. Students who commit egregious or repeat violations will automatically fail the course. All academic violations of the Honor Code will also be reported to the Provost, who may impose additional penalties for repeat offenders, and Honor Council, who may impose additional social penalties. For more information on how the Honor Code works, including the appeals process, refer to *The Wesleyanne: Student Handbook*.

Absence Policy

The following is taken from the *Wesleyan Catalogue* regarding absences:

Students are expected to be regular and punctual in attending classes, laboratories, private lessons, and college convocations. A student who is absent from any class may be penalized by the lowering of her grade in the course. The semester ends with the last day of the final exam week. Students are responsible for all absences from class, and it is the responsibility of the student to contact the professor about the possibility of making up work missed for any absence including field trips and athletic events authorized by the college. Students pursuing regular courses in art, music, and theatre are required to attend and take part in programs, plays, or exhibitions scheduled by the faculty of the respective areas. (29)

Because visual language skills develop slowly over time and with practice, regular participation is essential in this course. Any time students do not participate fully in discussion forum and live chat activities, their grades could suffer due to missed instruction, group assignments, and collaborative activities.

For these reasons, students are permitted no more than one unexcused forum or live chat absences. Beyond that, students may see a 5% deduction in their overall grade for each additional absence. Students should make every effort to inform the professor in advance whenever they will be absent due to illness, an emergency, or other extenuating circumstances. Doing so will drastically increase the likelihood of their being excused from class and able to make up missed assignments.

Late Work, Make Up, and Extensions

Late Work and Missed Deadlines: Deadlines in this course are firm. If you will be submitting work even a few hours late, e-mail your professor and any students (group project members, for example) who might be affected by your late submission. You should expect to receive a point deduction for any work submitted after a deadline has passed.

- o Classwork, forum activities, and quizzes may not be made up. Students are expected to be prepared to work and participate fully and on time in scheduled activities.
- o Practical Application Exercises may be turned in up to 24 hours late for ½ credit.
- o Major assignments (critical analysis essay and verbal analysis) may be submitted up to 48 hours late but will receive a point deduction according to the following guidelines: within 12 hours of the deadline = 10% deduction; within 24 hours of the deadline = 20% deduction; within 48 hours of the deadline = 30% deduction; and more than 48 hours beyond the deadline = a grade of zero.

Extensions:

In general, 24 hours is a reasonable amount of time to request for an extension. However, do not wait until the last minute to make the request. Late work will be accepted without incurring a point deduction only with prior permission from your professor. To request an extension on an assignment, use the following Grace Pass. Copy the text below into an e-mail to your professor and submit it at least 24 hours before the due date/time of the assignment. Remember to include a reasonable explanation for your request. **You have one Grace Passes to use during the term; use them wisely.**

Grace Pass	
Please grant me a 24-hour extension for the completion of (name assignment) _____.	
I agree to submit this assignment by (name date and time) _____.	
Signed: _____	Date: _____

Planned Absences:

Contact your professor a week before departure for any planned absence and arrange to submit work early or establish make-up work deadlines for when you return.

Emergency and Extenuating Circumstances:

When a family crisis, injury, illness, or any other extenuating circumstance occurs, your professor will certainly understand and will do the utmost to assist you with a modified assignment plan. Contact your professor as soon as possible to make arrangements for your work.

Dropping and Adding Course(s)

Students should exercise great caution in making changes to their course load during the drop/take period in any term, as changes to course schedules may affect both tuition charges and financial aid. Consultation with the Financial Aid Office staff is strongly advisable before making any adjustment to a course schedule. After the drop/take period in any term, no adjustment of tuition will be made, although adjustments to financial aid may be made (*Wesleyan Catalogue* 220).

Statement on Disabilities

Wesleyan College is committed to equal education, full participation and access to facilities for all students. Any student who requires reasonable academic accommodations, use of auxiliary aids or facility access for a class must first register with Disability Resources by contacting Jill Amos, Director of Disability and Advocacy Services, jamos@wesleyancollege.edu or (478) 757-3800. If reasonable accommodations are established, students should request Accommodation Letters from Disability Resources then schedule an appointment to meet with the professor to determine how the accommodations will be implemented for each class as early in the semester as possible. Accommodations require advance notice to implement and will not be retroactively administered for the semester. Accommodations that decrease the integrity of a course will not be approved.

Virtual Classroom & Forum Behavior

Civility in the Academic Community:

Students, faculty, and staff are expected to treat one another with respect in all interactions. In the classroom, rude, disruptive and/or disrespectful behaviors as determined by a faculty member interfere with other students' rights and with the professor's ability to teach. Therefore, any student exhibiting unacceptable behaviors during a class will be asked to leave and will be counted absent for that class period. Failure to cooperate with this process will result in disciplinary action that may include withdrawal from the class or dismissal from the College. Violations will be reported to the Provost.

Privacy in the Classroom:

In order to promote an environment in which ideas may be freely expressed, the interior office and virtual or in-person classroom spaces at Wesleyan are private spaces. The unauthorized creation of photographic images, audio, or video recordings of students or faculty in these spaces is considered to be disruptive behavior which may result in a student's removal from class according to the professor's discretion. The distribution of any such recordings of students or faculty without the express written permission of the College is strictly prohibited and is subject to disciplinary action by the Provost of the College.

Personal Electronic Devices:

Electronic devices (such as televisions, cell phones, tablets, and iPods) may not be used during live chat time, group work, or individual appointments. All devices must be turned off (or in silent mode) and stowed out of sight. Remember to stay with your professor in the virtual classroom at all times (no toggling between Internet windows!) unless instructed to do otherwise.

Turnitin (Plagiarism Detection) Policy

Students agree that by taking this course all required papers may be subject to submission for textual similarity review to Turnitin.com for the detection of plagiarism. All submitted papers will be included as source documents in the Turnitin.com reference database solely for the purpose of detecting plagiarism of such papers. Use of the Turnitin.com service is subject to the Usage Policy posted on the Turnitin.com site.

Trigger Warning

In visual art, artists often depend upon elements of surprise or shock to communicate their ideas and evoke responses from readers. To provide specific “trigger warnings” ahead of each piece that might potentially be offensive is to drain these artists and works of their power. To that end, please consider this statement your “trigger warning”: We will encounter works in this class that challenge our expectations, move us out of our comfort zones, and yes, potentially upset us. Working through our responses to consider (a) why artists might have wanted to challenge readers and (b) the techniques by which artists achieve their aims is a critical part of both visual analysis and your overall education at Wesleyan. Please visit with me during office hours if you have any questions about this policy.

Potential Changes to Course Syllabus and/or Course Schedule

The following class schedule is a general plan for the course. You will find more detailed instructions for each week’s activities and assignments on our Canvas course site. Deviations may be necessary, depending on students’ learning needs, and will be announced in advance via announcement and/or e-mail. Students should check their course site announcements and Wesleyan e-mail accounts at least once every twenty-four hours during the term to watch for updates regarding this class. Students should also respond to all e-mails from the professor within twenty-four hours.

CLASS SCHEDULE

Our typical online week will run Friday through Thursday to allow you the weekends for independent reading and studying as you choose. Each Friday morning, you will find all of the upcoming week’s course work posted on our course site. Make it a habit to take some time on Fridays to log in to our course site and look over your next set of readings, assignments, and deadlines so you may plan your study time accordingly. Please note our first “week” is a short one. Because we begin our term on a Wednesday, the first week will be short and will be focused on “getting our feet wet” and getting to know each other, but we do only have 8 weeks to move through our objectives so be prepared to dive in!

WEEK 1

Introductions, course orientation, review syllabus, discuss course goals, and Ice Breaker Exercise in our first Forum Discussion.

Homework:

- ☐ Watch Videos under “Orientation Week Overview”
- ☐ Assignments & Deadlines Posted on Canvas Course Site under “Weekly Learning Modules/Orientation Week”

WEEK 2 - Line, Context, & Critique

Explore Line and the power of figure/ground interactions for creating context. How to create a dialogue within the picture plane in a single mark. We will also introduce the parameters for critical dialogue, a transferable skill artists use to constantly and consistently improve their lexicon and composition.

Practical Application Assignment

Unit Quiz

Live Chat to discuss concepts of the week

Homework:

- ☐ Read PDF Files on critique strategies, the design process, and line as an element of art and design
- ☐ Review the Line Powerpoint and videos about Principles and Elements of Design
- ☐ Assignments & Deadlines Posted on Canvas Course Site under “Weekly Learning Modules/Week 2”

- ☐ Forum Discussion, Critical Dialogue of two historical works
-

WEEK 3 - Shape, Balance, & Contrast

This week we will explore Shape (element), Balance(principle), and Contrast (principle) as we dive more fully into Figure/Ground Interactions and continue to sharpen our critical analysis skills.

Practical Application Assignment

Unit Quiz

Live Chat to discuss concepts of the week

Homework:

- ☐ Read PDF Files on shape, balance, and contrast
 - ☐ Review the Shape Powerpoint
 - ☐ Assignments & Deadlines Posted on Canvas Course Site under “Weekly Learning Modules/Week3”
 - ☐ Forum Discussion, Critical Dialogue of two contemporary works
-

WEEK 4 - Pattern/Texture & Emphasis/Focal Point

Explore Pattern/Texture (elements) and Emphasis/Focal Point (principles)

Practical Application Assignment

Unit Quiz

Live Chat to discuss concepts of the week

Homework:

- ☐ Readings
 - ☐ Review Powerpoint
 - ☐ Assignments & Deadlines Posted on Canvas Course Site under “Weekly Learning Modules/Week4”
 - ☐ Forum Discussion, Critical Dialogue of one historic and one contemporary work
 - ☐ Schedule Mid-Term Verbal Review
-

WEEK 5 - MID-TERM REVIEW

Verbal Critical Analysis and the Illusion of Space Exercise

One-on-one student led critical discussions with professor. Students will apply vocabulary and critical analysis tools conversationally via Zoom Room.

Practical Application Assignment

Homework:

- ☐ Illusion of Space Demonstration
 - ☐ Assignments & Deadlines Posted on Canvas Course Site under “Weekly Learning Modules/Week 5”
 - ☐ Mid-Term Verbal Review
-

WEEK 6 - Motion & Rhythm

Together we will investigate the ways motion is suggested in a frozen moment and how rhythm (principle), can be employed as a device.

Practical Application Assignment

Unit Quiz

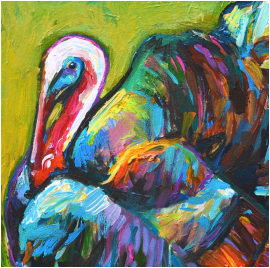
Live Chat to discuss concepts of the week

Homework:

- ☐ Read PDF Files on motion and rhythm
 - ☐ Review Powerpoint Presentation
 - ☐ Assignments & Deadlines Posted on Canvas Course Site under “Weekly Learning Modules/Week 6”
 - ☐ Forum Discussion, Critical Dialogue on an historical work of your choice
-

THANKSGIVING BREAK (Canvas Open for Student Access)

*****NO CLASS 11/22-27—Enjoy your break!*****



WEEK 7 - Value

This week will investigate the foundation for our final project on COLOR in Week 8: VALUE! We will consider the implications brought by the proper use of value to create content and to deliver accurate information to compositions. We will also review cultural interpretations of the principles and elements of design.

Practical Application Assignment

Unit Quiz

Live Chat to discuss concepts of the week

Homework:

- ☐ Read PDF Files on Value
 - ☐ Review the Value Powerpoint
 - ☐ Assignments & Deadlines Posted on Canvas Course Site under “Weekly Learning Modules/Week 7”
 - ☐ Forum Discussion, Critical Dialogue on a contemporary work of your choice
-

WEEK 8 - COLOR & UNITY/VARIETY

Our class will culminate in an exploration of the evocative power of color, especially when specific color systems are used to full effect, creating impact through unity and/or variety as we explore the works of powerful artists.

Practical Application Assignment

Written Critical Review

Live Chat to discuss concepts of the week

Homework:

- ☐ Read PDF Files on Color, Unity, and Variety
- ☐ Review the Color Powerpoint
- ☐ Assignments & Deadlines Posted on Canvas Course Site under “Weekly Learning Modules/Week 8”